

Installation and User Guide

---

## M-Bus Master MultiPort 250D

Web Server



## Contents

---

|     |                                   |   |
|-----|-----------------------------------|---|
| 1   | IP->COM program                   | 3 |
| 1.1 | Configuration of IP->COM          | 4 |
| 2   | Main menu                         | 6 |
| 3   | Status menu                       | 7 |
| 4   | Settings                          | 7 |
| 5   | Remote control                    | 8 |
| 6   | Event loggers                     | 8 |
| 7   | Power statistics                  | 9 |
| 8   | About M-Bus Master MultiPort 250D | 9 |

## Web Server

---

MultiPort 250D has a built-in web server for remote control and configuration.

The following programs can be used as PC-program:

- Microsoft® Internet Explorer version 8
- Mozilla Firefox 3
- Google Chrome 5

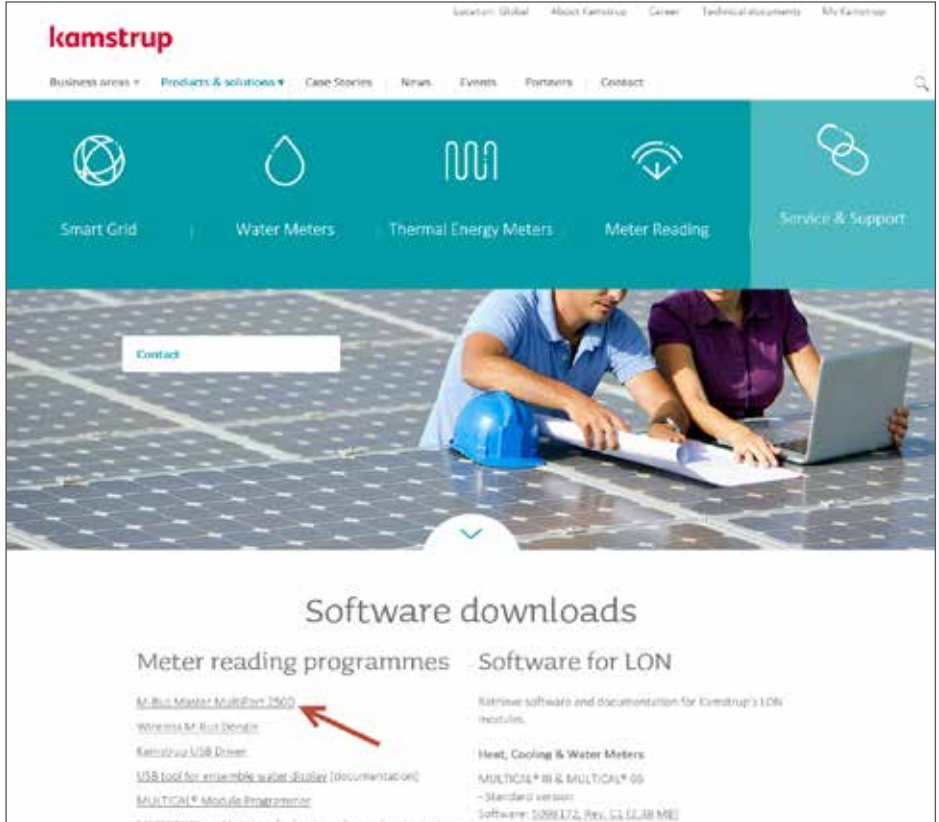
To be able to communicate with the master an IP for COM port converter must also be installed. The program can be collected on Kamstrup's homepages.

Communication can be effected via RS-232, RS-485 and USB.

The available options are described below.

# 1 IP->COM program

The program IP->COM Program\* is downloaded from <https://www.kamstrup.com/en-en/products-solutions/service-and-support/downloads-m-bus-master>.



Select; Products & solutions → Service & Support.

Save the program file on your PC. Start the installer program and follow the installation instructions on the screen.

Start the program when the installation has been completed.

\*] The IP->COM Program is Freeware from Stephen Hill. Copyright © 2002. All Rights Reserved.

## 1.1 Configuration of IP->COM

Select the COM port, to which the master has been connected. Please note that a USB connection requires the selection of a COM port too. Select Configure.



Standard start-up screen.

Select 38400, 8, None, 1, None and click on Apply.

Alternatively, 9600, 8, None, 1, None, can be selected if the cable is very long.

Please note that the operation at 9600 is somewhat slower than at 38400.

In the menu TCP/IP Service, select Allow multiple connections and Allow only 1st connection to Tx. Support Telnet and Strip Line feeds must be empty.

Port number is automatically filled in.

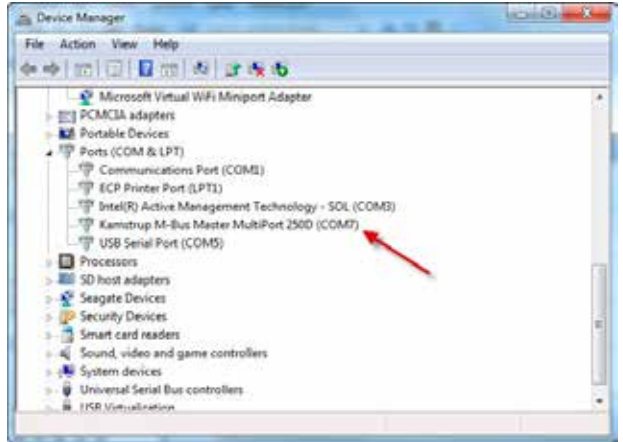
Then select Enable.



When finished, Disable must be selected in order to release the COM port.

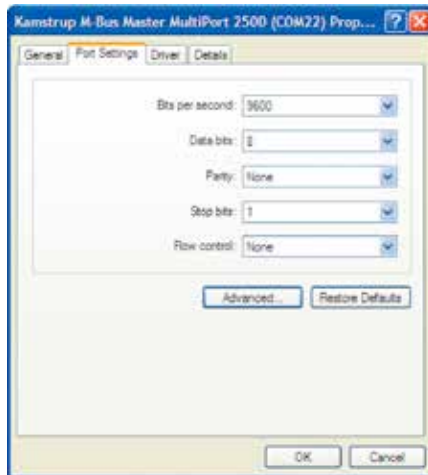


The selected COM port appears from Windows Device Manager.

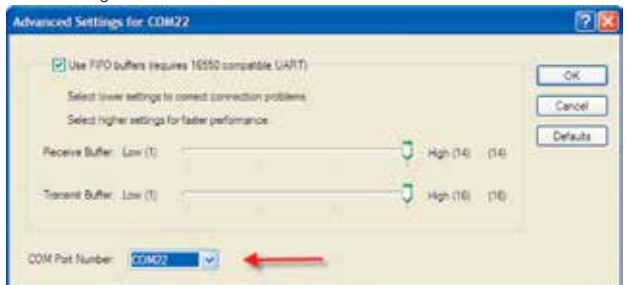


Device Manager.

If you want to change the selected COM port, double-click on it in Device Manager. Under Port settings select Advanced and change to the required COM port.



Port settings.



Port settings, advanced.

## 2 Main menu

---

In order to access M-Bus Master MultiPort 250D start the browser and enter the following, <http://localhost:xxxx>.

Replace xxxx by the Port Number of the program IP->COM. In the example 1022, of which 22 corresponds to the COM port, to which the master is connected.

Subsequently select the menu point you wish to apply.



### 3 Status menu

---

Displays various current status values for the master.



### 4 Settings

---

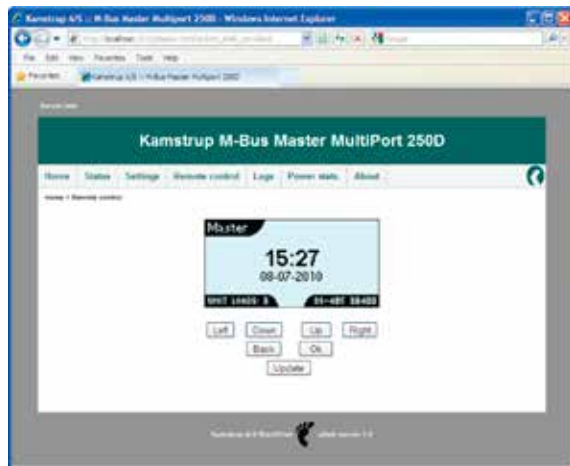
Setting of date, time, PIN code etc.



## 5 Remote control

---

The master can be remotely controlled via its web server.



## 6 Event loggers

---

Displays an overview of registered events.

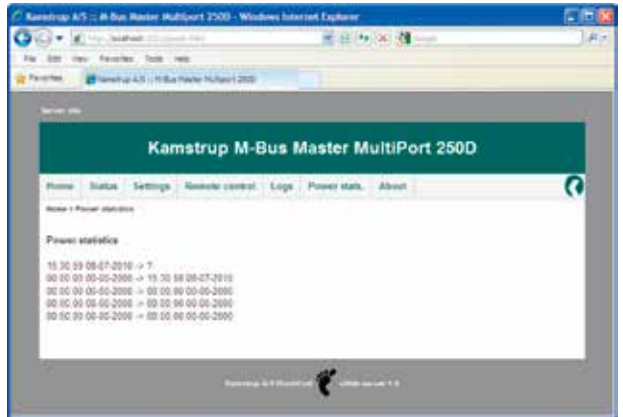




## 7 Power statistics

---

Displays in an overview when the master has been switched on and off.



## 8 About M-Bus Master MultiPort 250D

---

Displays an overview of serial number, HW and SW versions.







